



# SAINT-NAZAIRE - PORNICHET ALONG THE COAST Saint-Nazaire / Pornichet

16km 1 hour 15

**Departure:** Train station, Place Pierre Sépard - Saint-Nazaire

**Arrival:** Tourist Office - Pornichet

Characteristics:  
- Route through the town and on a cycle path  
- Follow route 14 of the Carène: **14**

**Saint-Nazaire Tourist Office (44600)**

12, Bd de la Légion d'Honneur -  
Tél. +33 (0)2 40 22 40 65  
www.saint-nazaire-tourisme.com -  
contact@saint-nazaire-tourisme.com

**Pornichet Tourist Office (44380)**

3, Bd de la République - Tél. +33 (0)2 40 61 33 33  
www.pornichet.fr - info@pornichet.fr

From the SNCF train station, cross the city centre of Saint-Nazaire, passing in particular the town hall, a symbol of post-war reconstruction architecture, then go along the magnificent seafront, with an obligatory photo stop in front of the Port Désiré fisheries. Then go to the Jardins d'Océanis via the Bois de Porcé, before going to greet Monsieur Hulot on the beach that bears his name in Saint-Marc-sur-Mer. The route ends at the marina in Pornichet, and you can admire the bay of La Baule from there.

**TO SEE ON THE WAY...**

**• The La Havane district**

With its colourful bourgeois-style houses, this district, which is close to the Jardin des Plantes and overlooks the seafront, evokes the Saint-Nazaire of the 1900s. The booming transatlantic port of the time had a traveller's soul as it watched the liners sailing to Central America. Some of the destinations: Santander, Havana, Veracruz... names that can be found on the street signs of this small, charming, preserved district.

**• The Jardins d'Océanis**

This Mediterranean-style green belt has been awarded the Regional Garden label. Inaugurated in 1993, it covers 14 hectares between Porcé beach and the Océanis district and is a real haven of peace, thanks to the exoticMediterranean plants and oceanic species.

**• Monsieur Hulot's beach**

If you have the impression that you have already seen the beach of Saint-Marc-sur-Mer, its jetty, its group of rocks and even the Hotel de la Plage overlooking the beach, it is normal: you are at the location chosen as the natural backdrop by Jacques Tati for his film Les Vacances de Monsieur Hulot. The filming took place in 1951... and Tati's main character is still here, thanks to the bronze statue by sculptor Emmanuel Debarre.

**• Sainte-Marguerite and Bonne Source beaches in Pornichet**

There is nothing like a short break facing the ocean to admire the breathtaking view of the islands off the coast. Sainte-Marguerite beach is more discreet and authentic and invites you to escape. Bonne Source is a real paradise for fishermen, not forgetting the unmissable coastal path which overlooks the dune.



**BICYCLE RENTAL COMPANIES**

- **Vélycéo** - 8, place Pierre Sépard - Saint-Nazaire Tél. +33 (0)800 10 51 10
- **Les cycles de la Baie** - 74, Av. du Général de Gaulle Pornichet - Tél. +33 (0)2 40 42 39 09
- **Les cycles Badeau** - 69, Av. du Général de Gaulle Pornichet - Tél. +33 (0)2 40 15 28 60
- **Ride All** - 52, Bd des Océanides - Pornichet Tél. +33 (0)2 40 61 58 17
- **Self-service electric bicycles (VAE)**  
Train station - Place Pierre Sépard - Saint-Nazaire submarine base - Bd de la Légion d'Honneur - Saint-Nazaire
- **Self-service electric bicycles (VAE)**  
Train station - Hippodrome roundabout - Pornichet



**FIND OUT MORE...**

**• The Saint-Nazaire Renversante visits**

Take a detour to the Saint-Nazaire submarine base and the fortified lock to explore the Saint-Nazaire Renversante sites... you won't be disappointed! You will be spoiled for choice: dive into the adventure of the legendary liners at Escal' Atlantic, experiment, blow and pedal your way through the production of electricity at sea at the EOL Centre Eolien, dive under the ice floe with the submarine Espadon and get a fascinating introduction to the history of the area by visiting the Ecomuseum. The icing on the cake: all these sites have been awarded the 'Accueil Vélo' label!



**CONTINUE ON YOUR WAY...**

- **Itinerary n°14** "From the fishing port and the marina to the shipyards"
- **Itinerary n°16** "The Loire by bike - Saint-Nazaire loop"
- **Itinerary n°17** "From the sea to the Briere"
- **Saint-Nazaire - Pornichet by Océanis** connecting route - **Itinerary 13** of the Carène

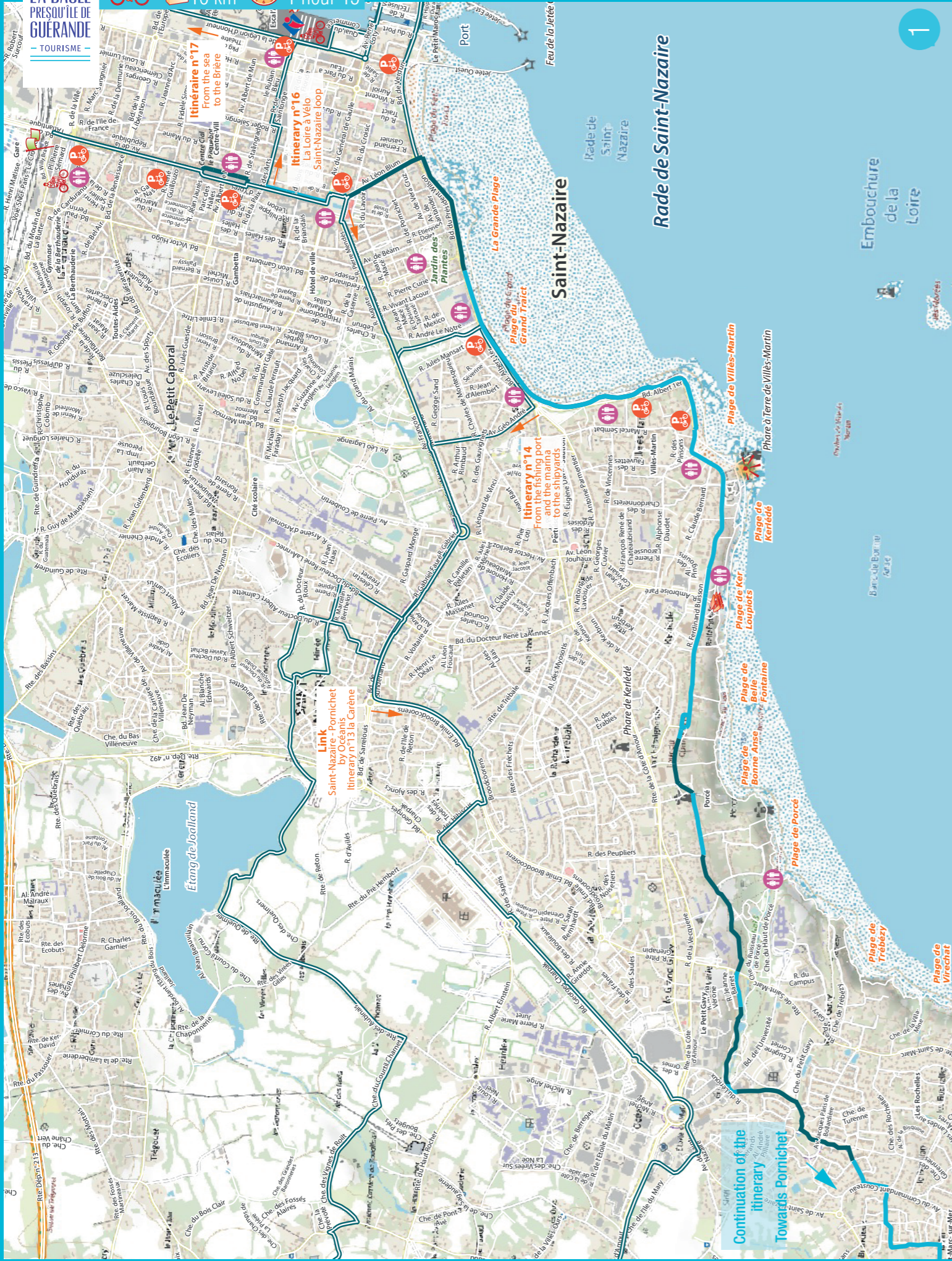




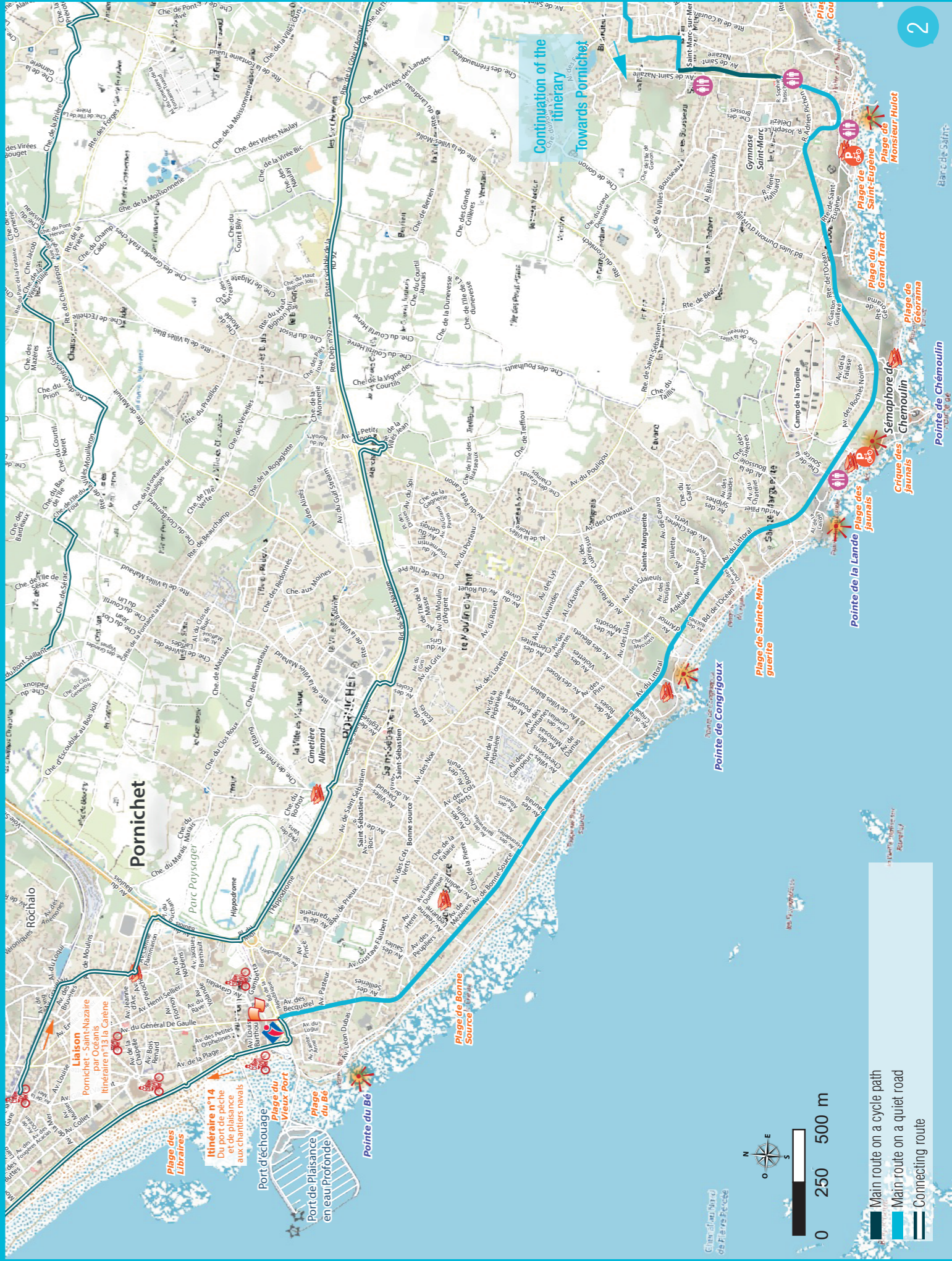
# SAINT-NAZAIRE - Pornichet ALONG THE COAST Saint-Nazaire / Pornichet

LA BAULE  
PRESQU'ÎLE DE  
GUÉRENDE  
TOURISME

16 km 1 hour 15



1



2

0 250 500 m

- Main route on a cycle path
- Main route on a quiet road
- Connecting route

Mapping: OUI! by © 2021. Photos: © 2021. Reproduction prohibited. Photo credits: A. KLOSSE, S. V. Pornichet LA DESTINATION - Produced by: © OUI! by - Printing: TP printing works - Z.A. L'Esplanade de l'Albatros, 85300 Sables-M. N°PFC: 10-31-153 - Printed in December 2021 - 0101118